



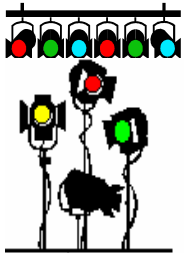
TCM-4020



**Total
Show Control**



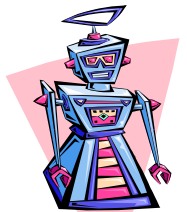
**Video
Playback**



**DMX
Lighting Control**



**Video & SMPTE
Time Code
Gen/Rcvr**



**Animatronics
Control**



**Digital Audio
Playback
& Control**

Media Pro[®] 4000

TCM-4020 Time Code Module

The TCM-4020 allows Cues and Animation to track SMPTE Time Code for synchronized applications. Any number of modules can be added to provide synchronization of numerous Cues and Real Time Animation data to multiple sources of SMPTE. In addition, external video can be connected to the TCM's video sync input to provide SMPTE phase locked to external video devices.

Standard TCM-4020 Features

- ♦ **Simultaneous SMPTE Generator and Receiver**
- ♦ **LED Display of Time Code and User Bits**
- ♦ **Transformer Isolated Input and Output**
- ♦ **Controllable from Cue Events**
- ♦ **Used to Synchronize Cues and Animation to SMPTE**

The TCM-4010 & TCM-4020 have different field wiring connectors. The TCM-4010 has individual discrete connectors, and the TCM-4020 has a single DIN48 permitting board removal without manual disconnection of field connector.



TCM-4020

Media Pro® 4000 TCM-4020 Time Code Module

TCM-4010 shown

Eight Digit LED Display
Shows Time Code in
Hours, Minutes, Seconds
and Frames or displays
User Bits

Two Position Toggle Switch
Selects Time Code or User
Bits Display Mode

Two Position Toggle Switch
Display of Received or
Generated Time Code

Red LED
Indicates User Bit Display

Red LED
Indicates Time Code
Display

Red LED Indicates Board is
Generating SMPTE Time
Code

Red LED
Indicates Board is
Receiving 30 Fps SMPTE
Time Code*

Red LED Indicates Board is
Receiving Valid Time
Code

Red LED
Indicates Forward
Advancing Time Code*

Red LED Indicates Drop
Frame*

Red LED Indicates Time
Code Framing Error*

*Indications applicable to
input Time Code only

TCM-4020 has a single
DIN48 permitting board
removal without manual
disconnection of field
connector.

BNC Connector - VSYNC IN

1/8" Jack - Time Code IN

1/8" Jack - Time Code OUT

Time Code Output Level
Control

Two Transformers Isolate
Time Code IN and OUT

Din 41612 type "C"
96 Pin DIN
Connects directly to the
Media Pro® Backplane

Solid Red LED Indicates
Module is in Download
Mode

Slow "Blinking" Green LED = Module Processor Running
Fast "Blinking" Green LED = Module is Communicating

Complete documentation is available for downloading at our Web site or by contacting our offices.

© 1998/1999 Anitech Systems, Inc., 25021 Arza Drive, Valencia CA 91355 USA
Phone (661) 257-2184 **Fax** (661) 257-2025 **E-mail** Mail@Anitech-Systems.com **Web** <http://www.Anitech-Systems.com>
 Specifications subject to change at any time.