



LCM-4020



**Total
Show Control**



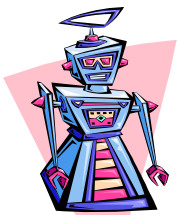
**Video
Playback**



**DMX
Lighting Control**



**Video & SMPTE
Time Code
Gen/Rcvr**



**Animatronics
Control**



**Digital Audio
Playback
& Control**

Media Pro[®] 4000

LCM-4020

Lighting Control Module

The LCM-4020 provides direct control of lighting dimmers, fixtures or moving lights used in your venue. Once the board is loaded with show resources, it can be controlled by the system ICM and played back in sync with the other resources in the application.

Standard LCM-4020 Features

- ◆ (5) Optically Isolated DMX (512) Channel Outputs and (1) Input
- ◆ (1) RS232 Serial Maintenance Port
- ◆ Controllable From Cue Events or Real Time Animation Data
- ◆ Show Data Stored in PCMCIA Flash Memory or PCMCIA Hard Drive
- ◆ (32) Cue Sheets with up to (512) Timed or Recorded Looks
- ◆ All Cue Sheets Pile-On to Board Level Patch



LCM-4020

**Media Pro® 4000 LCM-4020
Lighting Control Module**

PCMCIA Hard Drive for Recorded DMX Data Storage

Green LED Indicating DMX Transmitting

Red LED Indicating DMX Receive

Green LED Indicating Maintenance Port Transmitting

Red LED Indicating Maintenance Port Transmitting

Three Position Switch; Program, Test, Run

RJ11 6 Pin connector RS232 Maintenance Port

Red LED Indicating DMX Recording

Green LED Indicating Recorded DMX Playing

Green LED, Backplane Communications Indicator

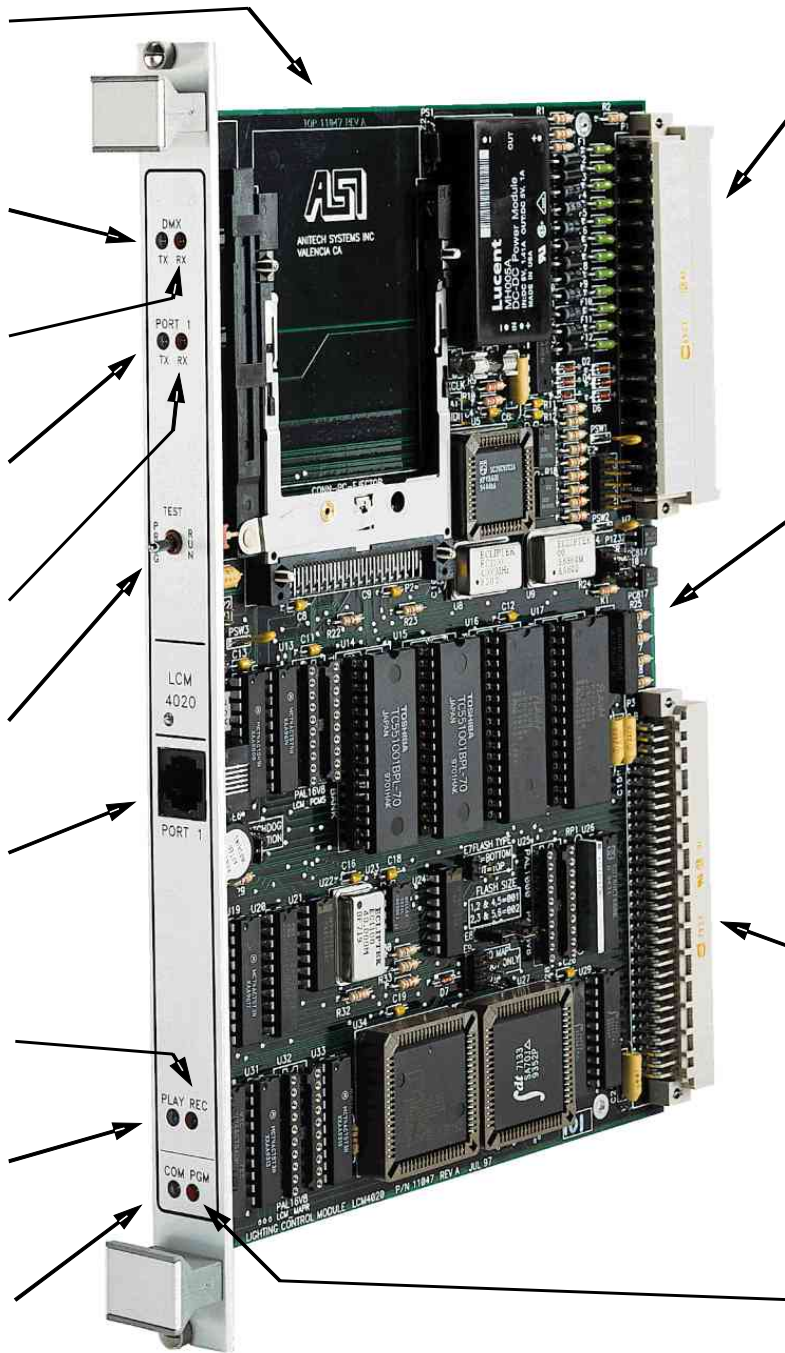
48 Pin DIN Field Connector

- 1 DMX Input
- 5 DMX Outputs
- Maintenance serial port

FLASH Memory for Code, configuration and Cue Data Storage

Din 41612 Type "C" 96 Pin DIN Connects directly to the Media Pro® Backplane

Red LED Programming & Maintenance Force Indicator



Complete documentation is available for downloading at our Web site or by contacting our offices.