



**ASM-4030**

# Media Pro<sup>®</sup> 4000

## ASM-4030

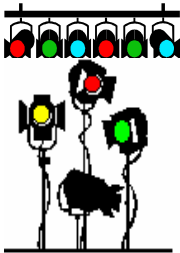
### Analog Servo Module



**Total  
Show Control**



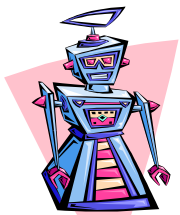
**Video  
Playback**



**DMX  
Lighting Control**



**Video & SMPTE  
Time Code  
Gen/Rcvr**



**Animatronics  
Control**



**Digital Audio  
Playback  
& Control**

The ASM-4030 provide high performance features for modern day animation or motion base servo applications. Each channels' servo personality parameters can be downloaded to the modules memory using the Media Pro<sup>®</sup> 4000 software. Once the channels are tuned, each can be moved to a position from a Cue or Animation data file.

### Standard ASM-4030 Features

- ◆ Supports Single Bipolar and Dual Unipolar Compliant Feedback for Pressure/Force Transducers
- ◆ (8) Non-compliant or (4) Compliant Servo Feedback Channels
- ◆ Adjustable Channel Gain, Accel, Decel, Velocity, Differential Gain, Force Gain
- ◆ Programmable E-Stop Home Position and Velocity Settings
- ◆ On-board Data Smoothing Filter (2000 Times Oversampling)
- ◆ Configurable 20, 50 or 100 MA Valve Current Drive,  $\pm 10$  volts DC Selections
- ◆ All Parameters Stored in Non-Volatile Flash Memory



**ASM-4030**

**Media Pro® 4000 ASM-4030  
Analog Servo Module**

Green LED  
(1 of 8 Channels)  
indicates Negative Output  
Signal on that Channel

Red LED  
(1 of 8 Channels)  
Indicates Positive Output  
Signal on that Channel

Green LED  
Communications  
Indicator

Red LED Programming  
& Maintenance Force  
Indicator

48 Pin DIN Field Connector  

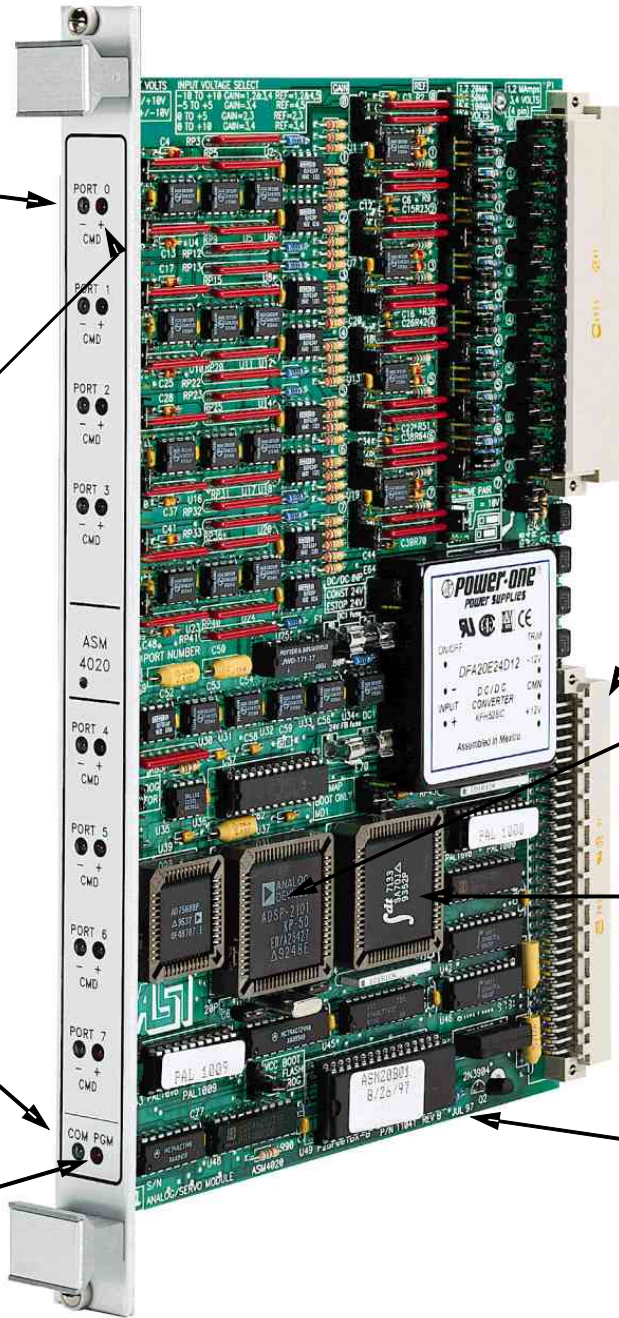
- Position Feedback Input
- Pressure/Force Inputs
- Analog Servo Outputs

Din 41612 type "C"  
96 Pin DIN  
Connects directly to the  
Media Pro® Backplane

DSP Processor  
Running at 20 MHz

Dual Port RAM for  
Media Pro® Backplane  
Communication Interface

FLASH Memory for Code  
and Parameter Storage



ASM-4020 Shown

Complete documentation is available for downloading at our Web site or by contacting our offices.