



**ABM-4010**



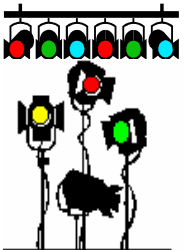
**Total**

**Show Control**



**Video**

**Playback**

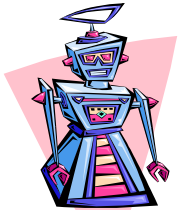


**DMX**

**Lighting Control**



**Video & SMPTE  
Time Code  
Gen/Rcvr**



**Animatronics  
Control**



**Digital Audio  
Playback  
& Control**

# Media Pro<sup>®</sup> 4000

## ABM-4010

### Allen Bradley Module

The ABM-4010 provides AB PLC 5 and SLC 500 Remote Input/Output (RIO) Network expansion for the Media Pro<sup>®</sup> 4000 system. With this module, the Media Pro<sup>®</sup> 4000 looks like a rack to the PLC and provides direct communication of rack and/or block transfer information to and from the PLC's data table using a standard Allen Bradley RIO Cable.

By connecting the Media Pro<sup>®</sup> System to the RIO Network, the PLC communicates to the Media Pro<sup>®</sup> as if it were a standard 1/4 to full PLC rack of I/O. The PLC data is mapped to the Media Pro<sup>®</sup> Input or Output Channel space providing control and communications to all the Media Pro<sup>®</sup> resources. In addition, block transfers of up to 64 PLC words can be processed.

Once the ABM is configured and connected to a PLC RIO network, the PLC can start, stop or reset cues, trigger DSM cards, update ASM cards or any other devices that are mapped to logical channel space.

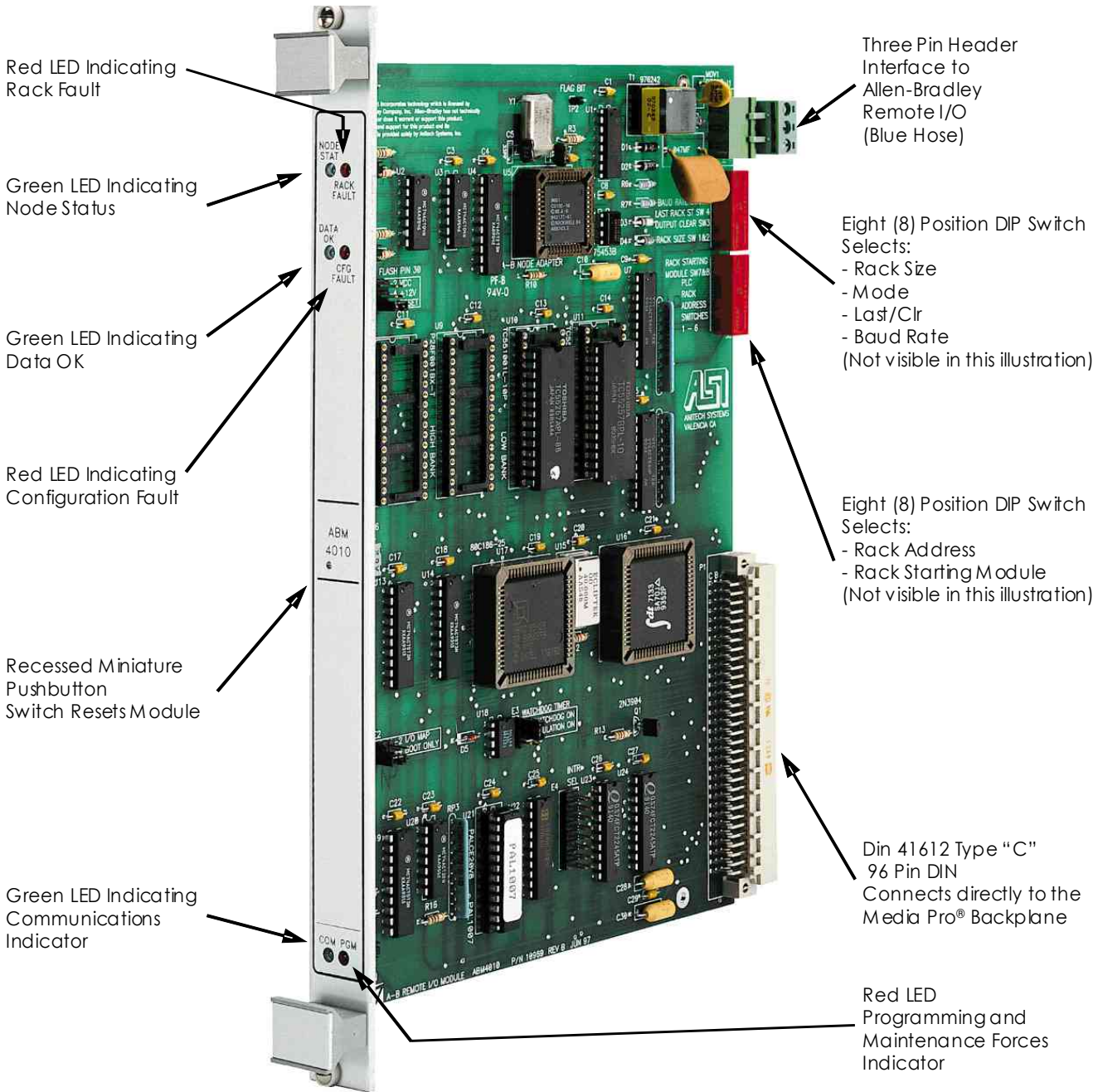
#### Standard ABM-4010 Features

- ◆ Addressable as 1/4, 1/2, 3/4 or Full Remote Rack
- ◆ Supports Block Transfers Up to 64 Words
- ◆ PLC Rack Space Directly Mapped to Media Pro<sup>®</sup> Logic Channels
- ◆ Configuration by On-board Dip Switches



**ABM-4010**

# Media Pro® 4000 ABM-4010 Allen Bradley Module



Complete documentation is available for downloading at our Web site or by contacting our offices.